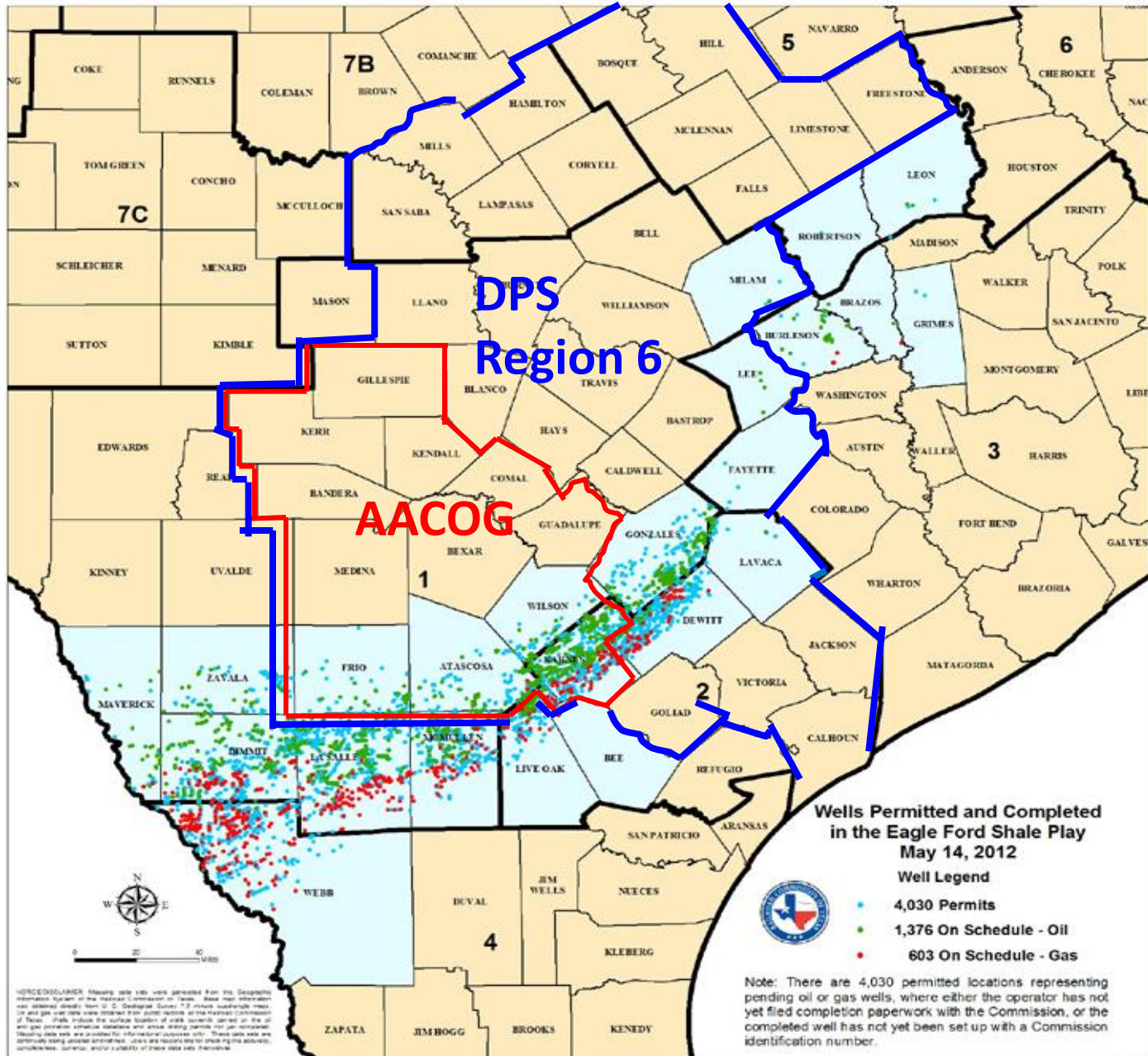
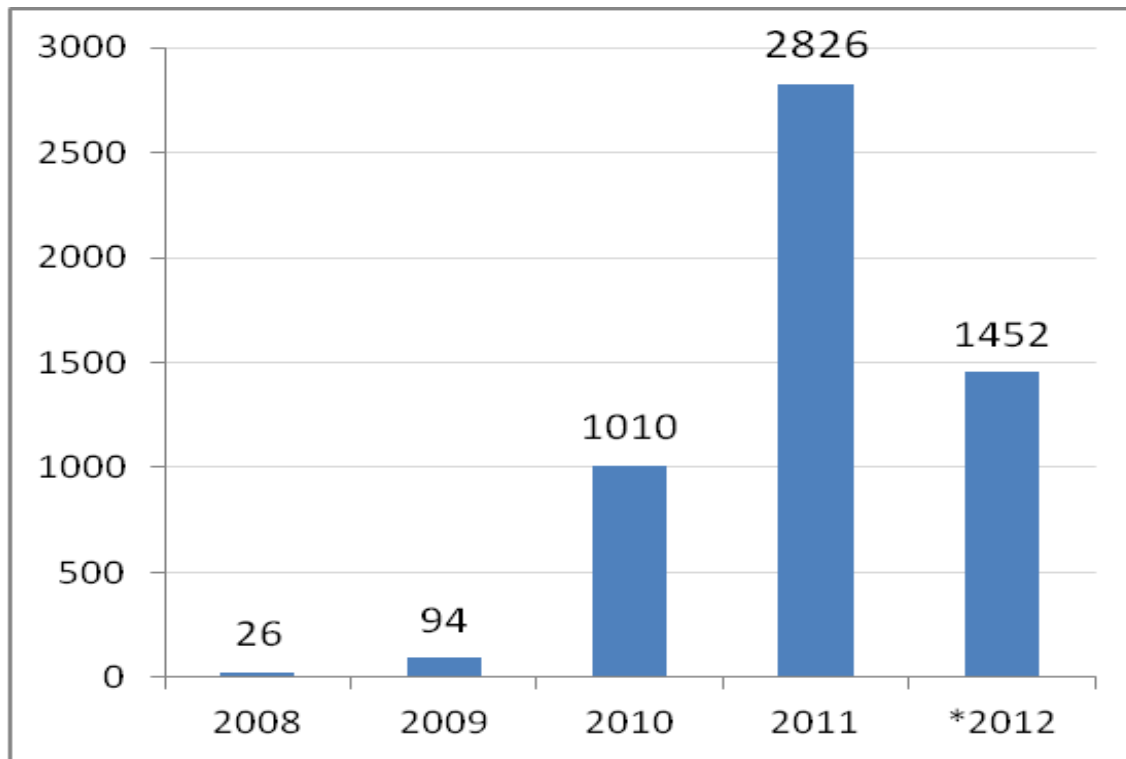


Eagle Ford Shale Fields cover 23 counties



EFS Drilling Permits Issued		
2008 through April 2012		
Year	Permits	% Increase
2008	26	N/A
2009	94	262%
2010	1,010	974%
2011	2,826	180%
*2012	1,452	N/A

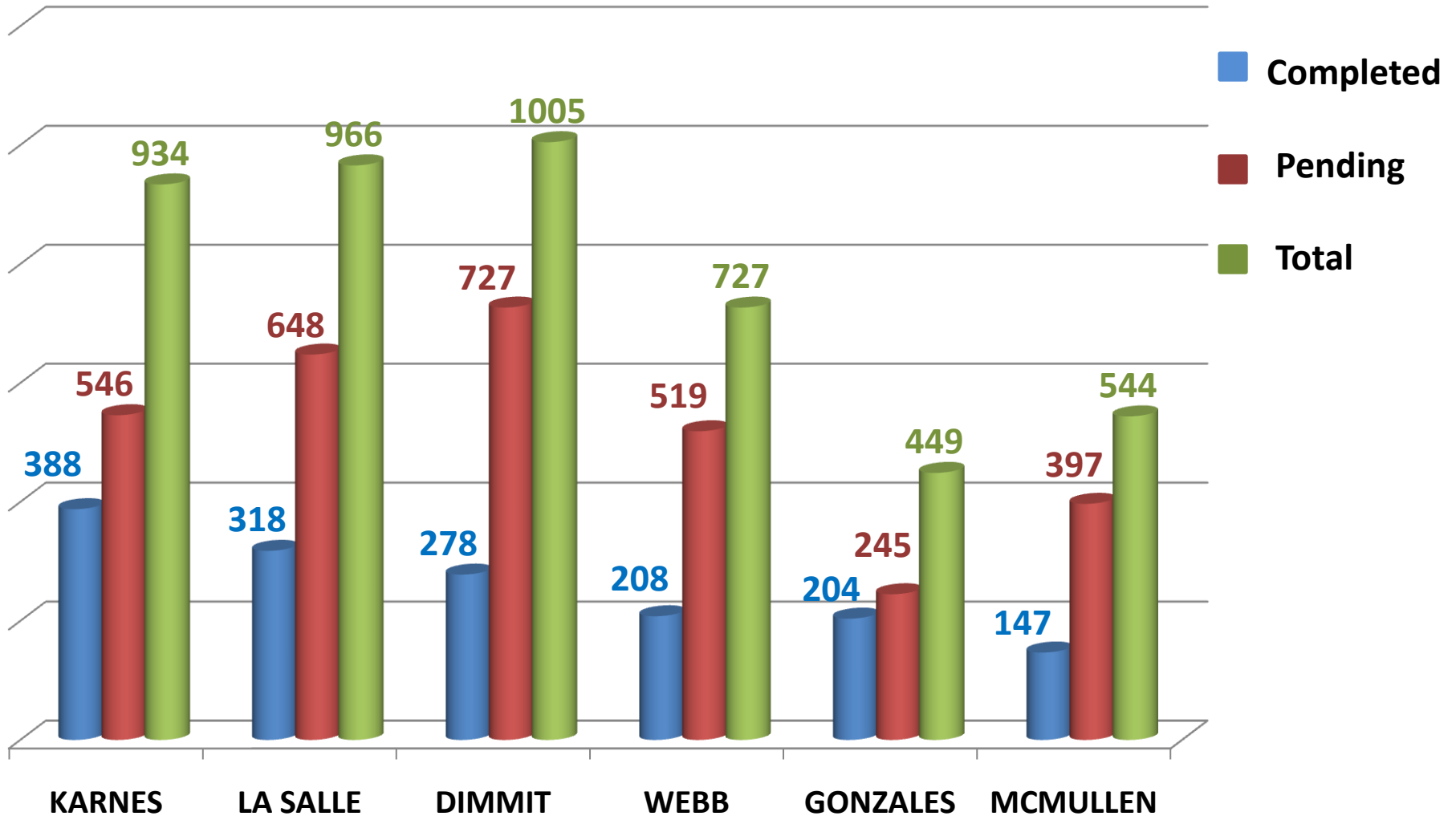


Note: 2 years to drill from date of Permit

EFS Wells Completed & Pending

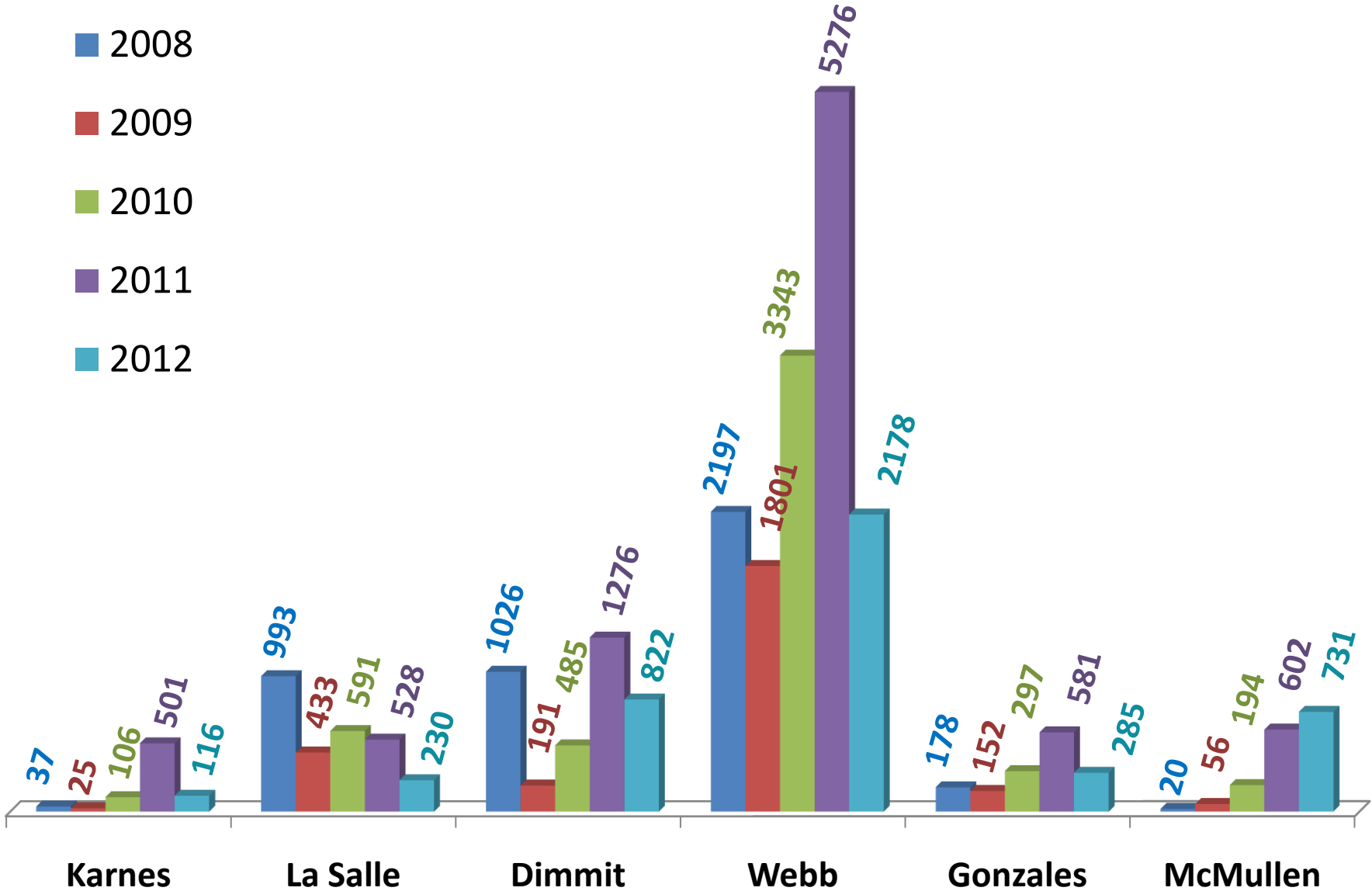
Data as of May 2012

1/2 of all Completed Wells are in: Karnes, Dimmit, & La Salle Counties

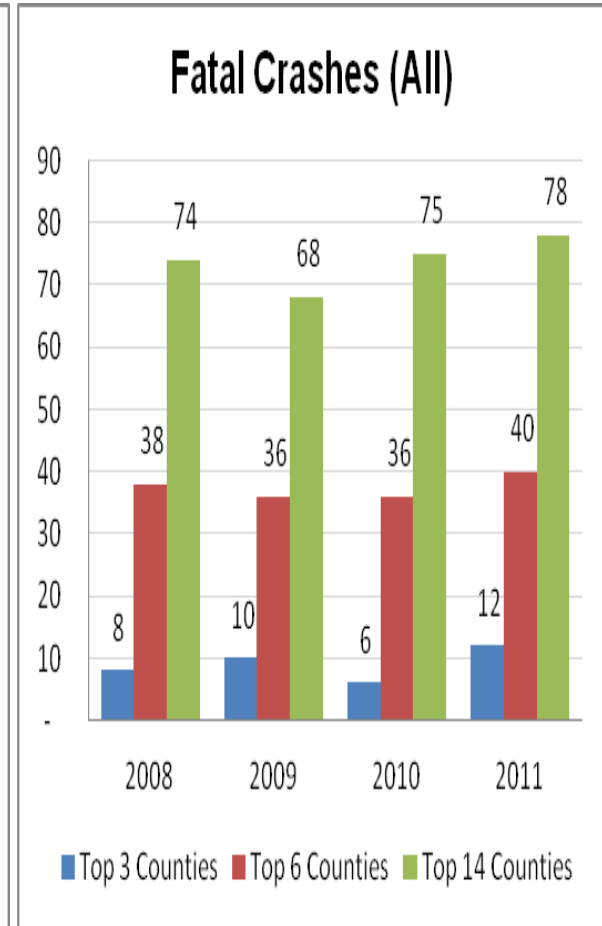
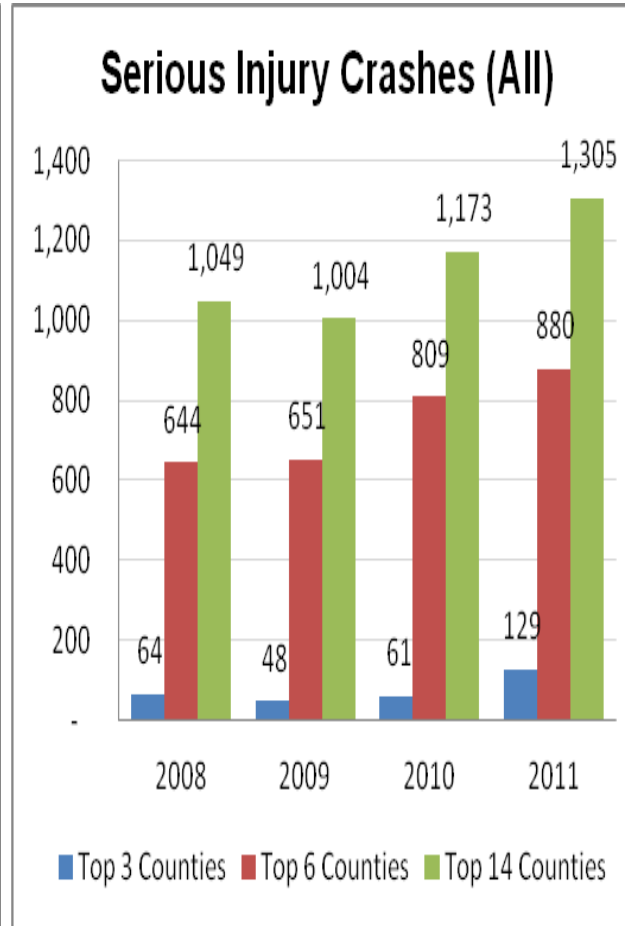
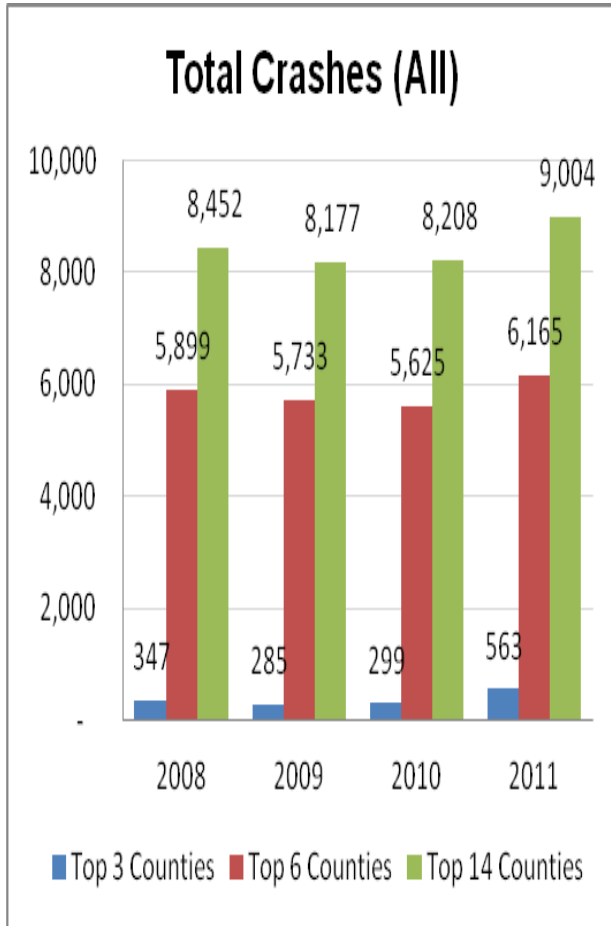


THP Commercial Vehicle Inspections THROUGH MAY 31, 2012

- 2008
- 2009
- 2010
- 2011
- 2012



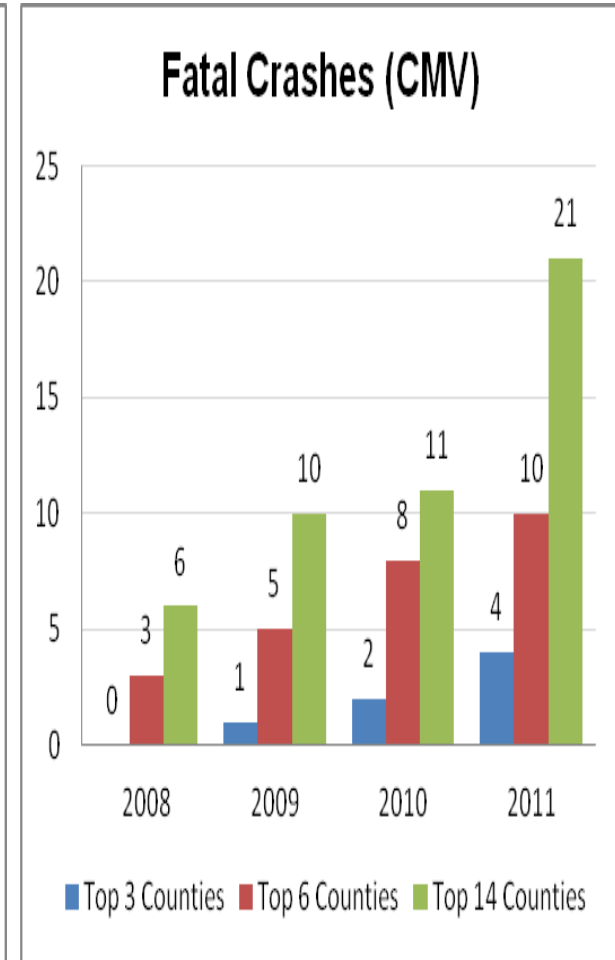
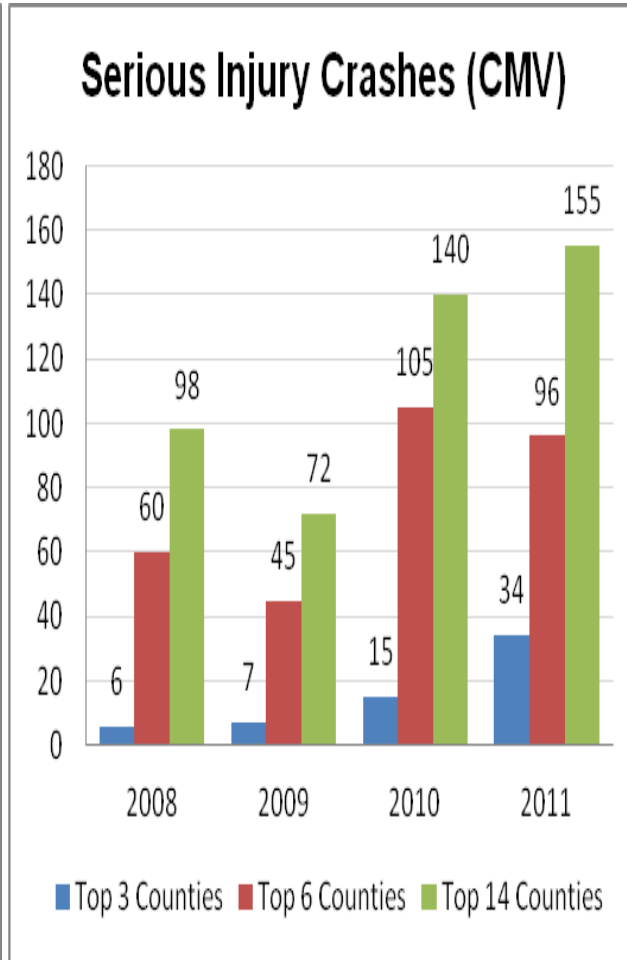
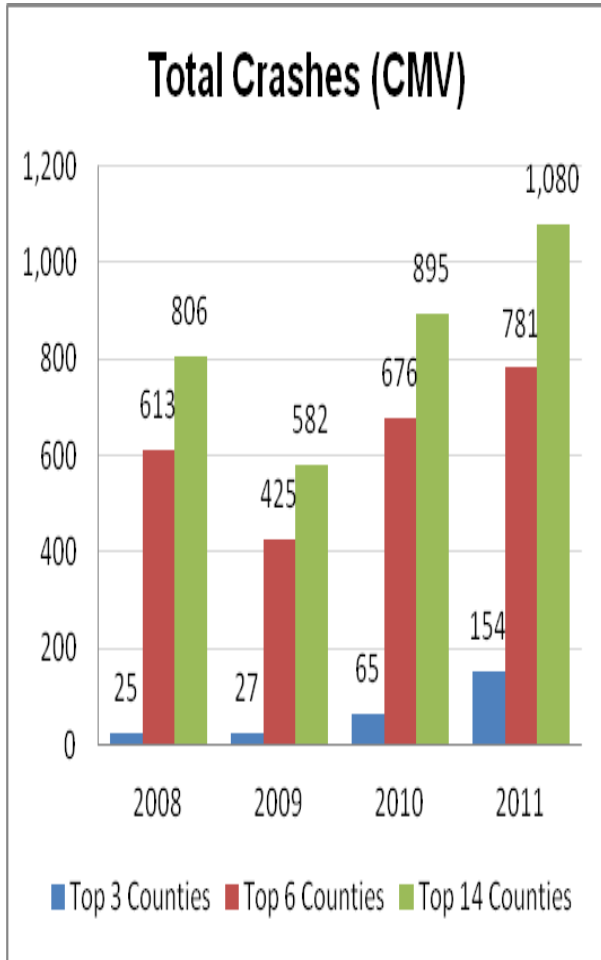
All Crashes



■ Top 3 Counties = **Karnes** (4 Troopers & 1 CVE Trooper), **LaSalle** (8 Troopers), **Dimmit** (2 Troopers)

■ Top 6 Counties = **3 above plus:**
Gonzales (10 Troopers), **McMullen** (1 Trooper)
Webb (21 HP Troopers & 78 CVE Troopers/Inspectors),

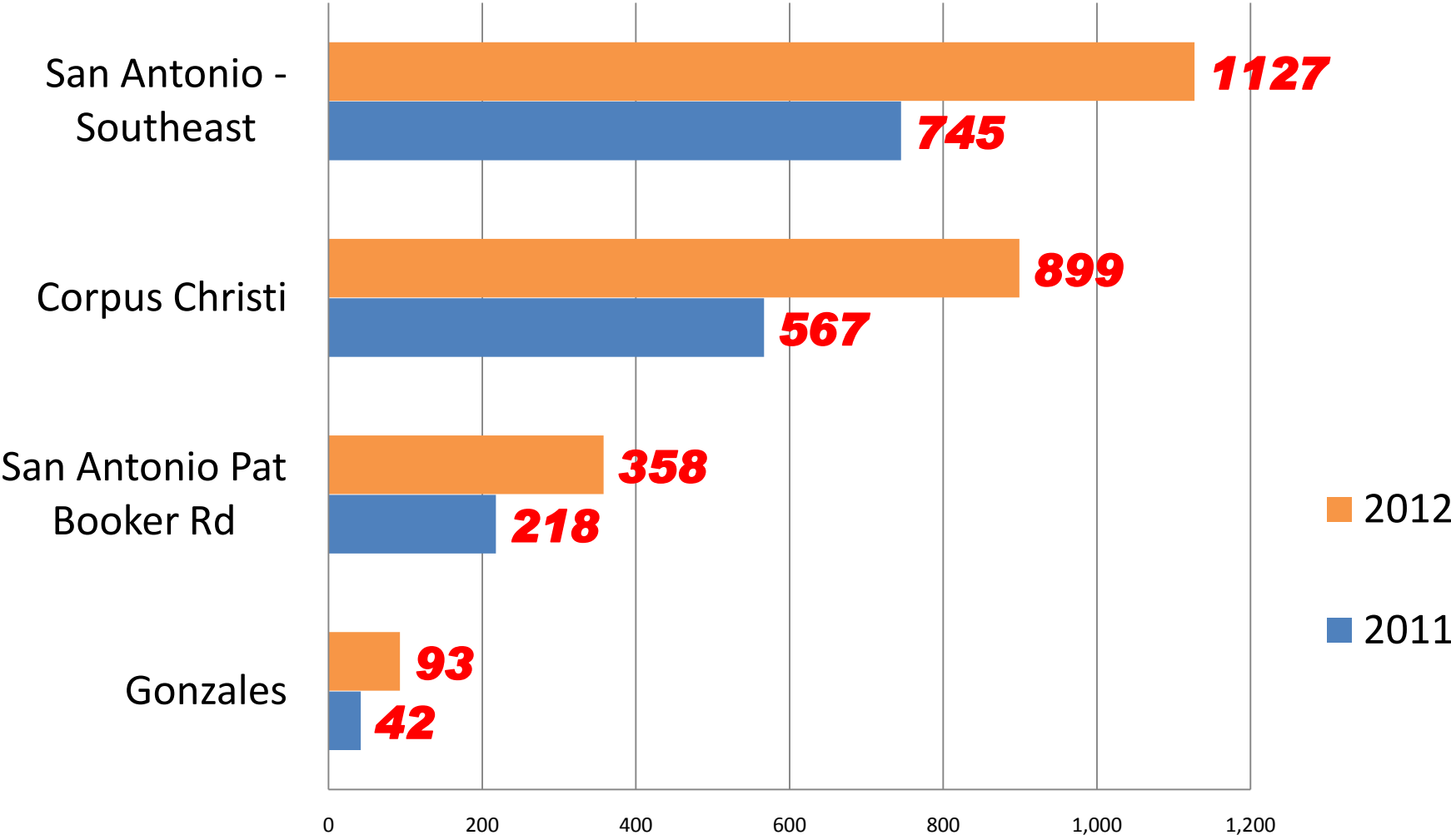
COMMERCIAL VEHICLE CRASHES



■ Top 3 Counties = **Karnes** (4 Troopers & 1 CVE Trooper), **LaSalle** (8 Troopers), **Dimmit** (2 Troopers)

■ Top 6 Counties = **3 above plus:**
Gonzales (10 Troopers), **McMullen** (1 Trooper)
Webb (21 HP Troopers & 78 CVE Troopers/Inspectors),

Commercial Driver License Drive Exams January - June 2011 and January - June 2012



FORECAST

Eagle Ford Shale Activity to grow substantially.

- Drilling permits 1st 4 months of 2012—more than half of all of 2011.
- As of May 2012---4,047 wells permitted but not completed
--- (must complete within 2 years of permit issue date)
- Growth concentration to continue --- Karnes, LaSalle, Dimmit, Gonzales, McMullen, & Webb Counties.
- Growth to be more pronounced for example:
 - Karnes County 546 pending wells (141% increase)
 - Dimmit County 727 pending wells (262% increase)
 - Dewitt County 389 pending wells (409% increase)



J. GALVAN
2011

TEXAS HIGHWAY PATROL DISTRICT 6 C CRIMINAL INTERDICTION



THE EYES OF TEXAS ARE UPON YOU

REGION 6 – DPS

HIGHWAY PATROL & CVE RESPONSE



7,480 LB MARIJUANA SEIZURE ON US 59 IN VICTORIA COUNTY

EAGLE FORD SHALE TASK FORCE

- DPS REGION 6 STARTED TASK FORCE OPERATIONS IN 2012
- THREE-DAY TASK FORCE ONCE A WEEK-TARGET COUNTIES (KARNES, WILSON, GUADAUPE, GONZALES, DEWITT, ATASCOSA, AND FRIO).
- 20 TROOPERS (HP & CVE) PLUS 2 SERGEANTS (HP & CVE)
- PARTNERSHIPS WITH OIL FIELD/ TRUCKING INDUSTRY
- PARTNERSHIPS WITH LOCAL LAW ENFORCEMENT, LOCAL ELECTED OFFICIALS, COMMUNITY AND MEMBERS OF THE LOCAL MEDIA
- TRAINING SESSIONS ON OFFICER SAFETY AND CMV INSPECTION FOR TROOPERS AND LOCAL LAW ENFORCEMENT
- ULTIMATE GOAL-REDUCTION IN CRASHES AND SAFETY FOR THE PUBLIC

EAGLE FORD SHALE TASK FORCE CONT.

RESULTS:

- 1,392-CMV'S INSPECTED
- 294 - CMV'S PLACED OUT-OF-SERVICE FOR EQUIPMENT VIOLATIONS
- 89 - CMV DRIVERS PLACED OUT-OF-SERVICE FOR DRIVER VIOLATIONS