




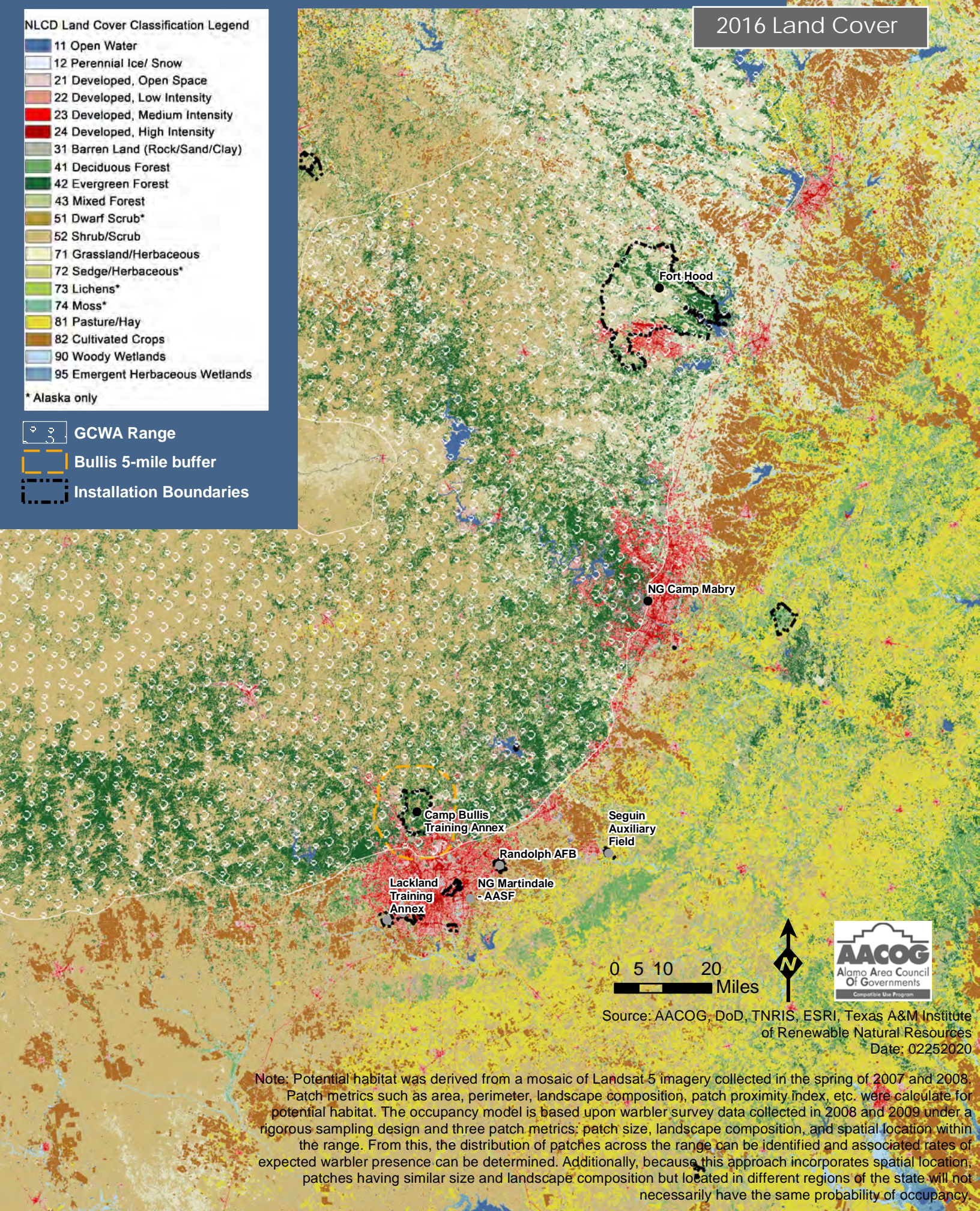
Golden-Cheeked Warbler Habitat Range & Texas Military Installations

2016 Land Cover

NLCD Land Cover Classification Legend

- 11 Open Water
 - 12 Perennial Ice/ Snow
 - 21 Developed, Open Space
 - 22 Developed, Low Intensity
 - 23 Developed, Medium Intensity
 - 24 Developed, High Intensity
 - 31 Barren Land (Rock/Sand/Clay)
 - 41 Deciduous Forest
 - 42 Evergreen Forest
 - 43 Mixed Forest
 - 51 Dwarf Scrub*
 - 52 Shrub/Scrub
 - 71 Grassland/Herbaceous
 - 72 Sedge/Herbaceous*
 - 73 Lichens*
 - 74 Moss*
 - 81 Pasture/Hay
 - 82 Cultivated Crops
 - 90 Woody Wetlands
 - 95 Emergent Herbaceous Wetlands
- * Alaska only

-  GCWA Range
-  Bullis 5-mile buffer
-  Installation Boundaries



0 5 10 20 Miles



Source: AACOG, DoD, TNRI, ESRI, Texas A&M Institute of Renewable Natural Resources
Date: 02252020

Note: Potential habitat was derived from a mosaic of Landsat 5 imagery collected in the spring of 2007 and 2008. Patch metrics such as area, perimeter, landscape composition, patch proximity index, etc. were calculate for potential habitat. The occupancy model is based upon warbler survey data collected in 2008 and 2009 under a rigorous sampling design and three patch metrics: patch size, landscape composition, and spatial location within the range. From this, the distribution of patches across the range can be identified and associated rates of expected warbler presence can be determined. Additionally, because this approach incorporates spatial location, patches having similar size and landscape composition but located in different regions of the state will not necessarily have the same probability of occupancy.